

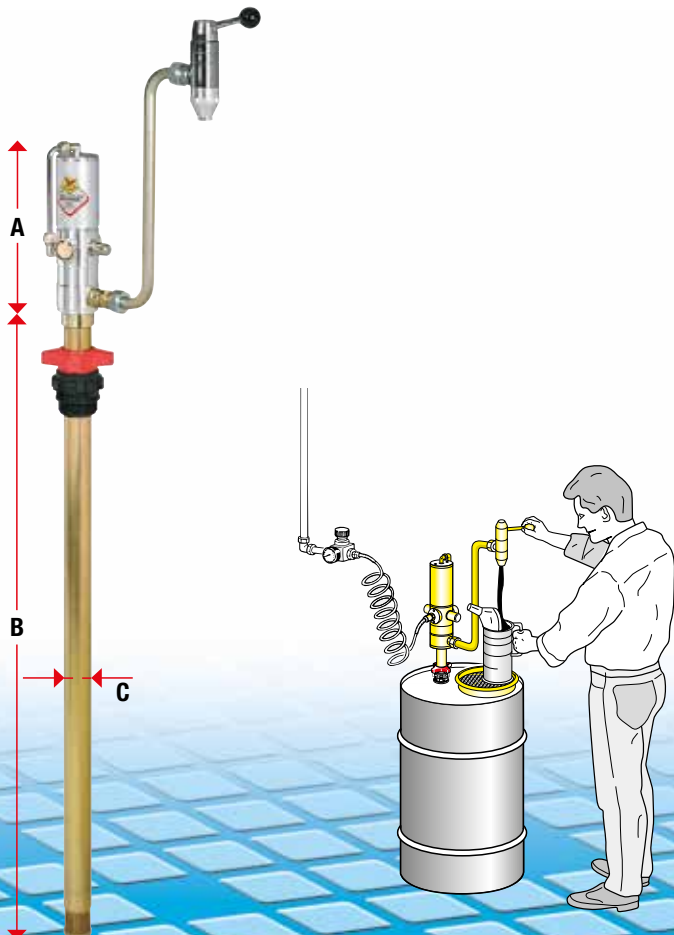


Drum oil BAR

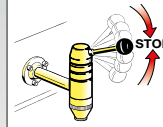
Drum oil bar.
Ideal for dispensing oil and antifreeze liquid.
 The delivery tap is connected directly to the feed pump. Very compact, it enables quick filling of jugs or other small containers.



Article		37697	37698
Ratio		3:1	3:1
Flow rate	l/min	14	14
Pump	Art.	35194	35194
Tap for oil bar	Art.	37683	37683
Drip-catcher tray	Art.	37699	-
Bung adaptor	Art.	38042	38042
Packing	N° - m ³	2 - 0,034	2 - 0,025
Weight	kg	12	9,5
Dimensions (A-B-C)	cm	28,5 - 94 - 4,2	28,5 - 94 - 4,2

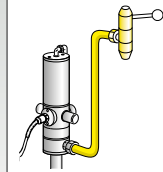


OIL BAR ACCESSORIES

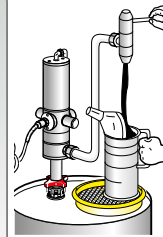


Art. 37692
Double valve tap with antisplash filter for oil bar inlet connection
 F 1/2" + M 3/4"

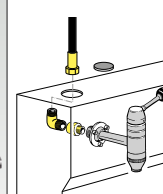
Note: both articles guarantee maximum delivery while preventing sprays caused by possible air bubbles in the system. Closing is automatic upon releasing the lever



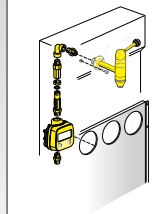
Art. 37683
Oil tap with pump connection,
 equipped with:
 - Art. 37681 tap for oil bar
 - Art. 37682 pump
 - oil bar tap connection tube



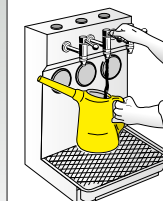
Art. 37699
Drip-catcher tray



Art. 37693
Kit for connecting oil bar to fixed system,
 equipped with:
 - Art. 996.301 tube
 M 1/2" x F 1/2" - 1 m
 - elbow
 M 1/2" x M 1/2"
 - nipple
 M 1/2" x F 1/2"



Art. 37830
Digital litre-counter kit for oil bar,
 equipped with:
 - Art. 37780 digital litre-counter
 - connection unions
 - connections
 M 1/2" x F 1/2"
 - not type-approved for public use



Art. 38102
2-litre jug

Art. 38105
5-litre jug

* articles not manufactured by us