

# CONTAINER TANK



## CONTAINER TANK BUNDED ADR TANK

Double-wall, water & snow proof transportable tank for diesel oil and fuel.  
Large storage room for tools and equipment.  
Easy refuelling with fitted pump. Internal baffles for safe transport.  
Fully safe and eco-friendly.  
External skin capacity up to 110% for securing the environment in case of leakage.  
Drainage pipe for comfortable external container emptying.  
4 pcs. of liftings eyes on top  
Sandblasted and painted to C3, 90 microns.  
ADR/RID 2011 approved/ U1202 and UN1203

### FITTED WITH FOLLOWING STANDARD EQUIPMENT

*(equipment varies according to country).*

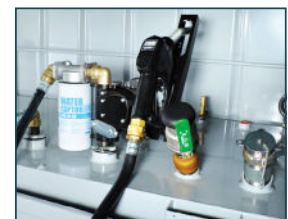
- 2 pcs. of 1" suction pipe
- Level indicator
- 2" filling cap
- Whistle with ball valve
- Safety valve
- Nozzle holder

### OPTIONAL EQUIPMENT

- 12,24 or 230 volt pump
- Meter
- Filter
- Hose
- Aut. nozzle
- Chains for lifting
- Quick connection
- Overfill protection
- Lock



Triple stacking when empty  
for efficient storage



Large storage room for  
tools and equipment.



Safe and handy forklift pockets  
on each side

# CONTAINER TANK

| Container tank     | Volume litre | Dimensions in cm      | Weight in kg | Item number |
|--------------------|--------------|-----------------------|--------------|-------------|
| Containertank 600  | 600 l        | L2000 x B1000 x H1080 | 374          | 161821      |
| Containertank 750  | 750 l        | L2000 x B1000 x H1080 | 399          | 161822      |
| Containertank 1000 | 1000 l       | L2200 x B1450 x H1850 | 1120         | 161823      |
| Containertank 1500 | 1500 l       | L2200 x B1450 x H1850 | 1280         | 161824      |
| Containertank 2000 | 2000 l       | L2200 x B1450 x H1850 | 1410         | 161825      |
| Containertank 2500 | 2500 l       | L2200 x B1450 x H1850 | 1440         | 161830      |
| Containertank 3000 | 3000 l       | L2200 x B1450 x H1850 | 1510         | 161835      |

